

Data Sheet

TIM for triple and quadruple glazed profiled glass

Date 2.3.2019

The triple or quadruple U-channel glass systems are suitable for glass facades with high requirements for thermal insulation and large window heights over 3 - 3.5 m, where the dual single glazing of the system Ug 0,8 is not usable.

A **triple glazed U-profile glass** structure with an external double glazing improves the structural stability of the Ug 0.8 system and may be necessary when planning with higher wind loads or longer glass panes.

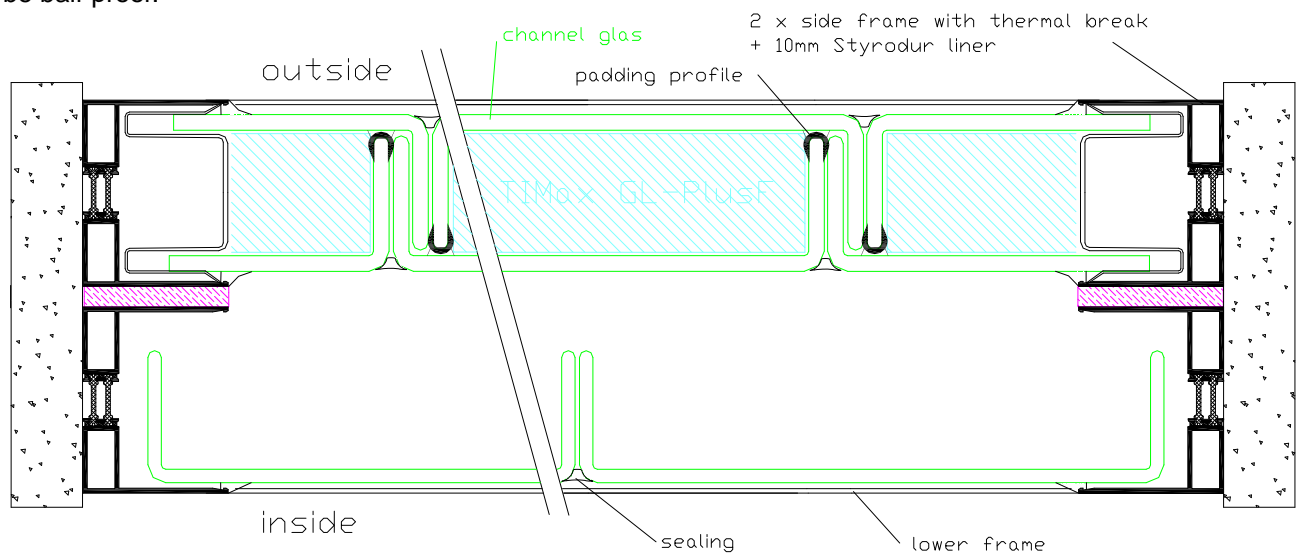
For a ball-proof sports hall glazing, a triple glazed construction with an inner double glazing is used. The double glazing unit generates enough stability to be ball-proof.

A **quadruple glazed U-profile glass** construction is used in sports halls, if the requirements of statics and / or wind load require double glazing on the outside, and ball-proof safety requires double glazing on the inside.

Installation: See installation instructions

Tender text for download under:

www.wacotech.de, products profiled glass



Technical data

for TIMax® GL-PlusF as insert in a triple glazed U-profiled glass facade

Glass type + frame system	insulating insert	Ug-value [W/m²K]	g-value direct	light transm. τ direct	noise red. Rw [dB]
Outside double-glazed profiled glass type 262/60/7 and inside single-glazed profiled glass, two separate frames with 10mm Styrodur liner.	one layer TIMax® GL-PlusF	0,87** 0,97***	0,24*	0,24*	>53*

* measured values, test certificate available

** test certificate from Glasfabrik Lamberts, with a low-e coating on the inner shell

*** test certificate from Wacotech, without low-e coating on the inner shell